

2023 Impact Report

Message from the CEO

As I have personally experienced, cancer can feel like a game of Jenga. Stressors pile on top of each other until the unstable stack comes crashing down.

Distress matters when it comes to fighting cancer. According to the National Cancer Institute, “patients can develop a sense of helplessness or hopelessness when stress becomes overwhelming. This response is associated with ***higher rates of death.***” This is why Cancer Care measures the impact of our programs based on how we reduce distress in the lives of our clients. With each block of distress we remove, a client’s Jenga tower becomes smaller and more stable.

Our holistic approach improves ***quality of life*** in multiple ways – from reducing fear to improving relationships (not to mention the financial distress we alleviate by assisting with critical needs like health insurance and transportation to treatment). I am proud of our team who directly touches the lives of those who need HELP & HOPE, and I am thankful to those who make our mission possible by investing in us!

-Melanie Wilson, CEO & Cancer Survivor

How did our social workers help cancer patients reduce their distress?*

73% of adults who completed counseling felt less distress.

52% of clients felt less depressed, afraid, and isolated.

46% of clients had less physical discomfort and fatigue.

29% of clients were more physically active.

25% of clients improved communication with their doctor.

15% of clients improved their relationship with their partner.

*Data was gathered using the nationally-recognized Distress Tool



\$463,545

provided in direct financial assistance

Of clients who provided their income:

71% of clients with very low to moderate income, based on Area Median Income

8% of households had no income



36% increase

in clients who used transportation assistance (gas cards & Lyft rides) to get to and from treatment

25% increase

in clients who received assistance with health insurance payments



Scan the QR Code to learn about the impact of our social workers.

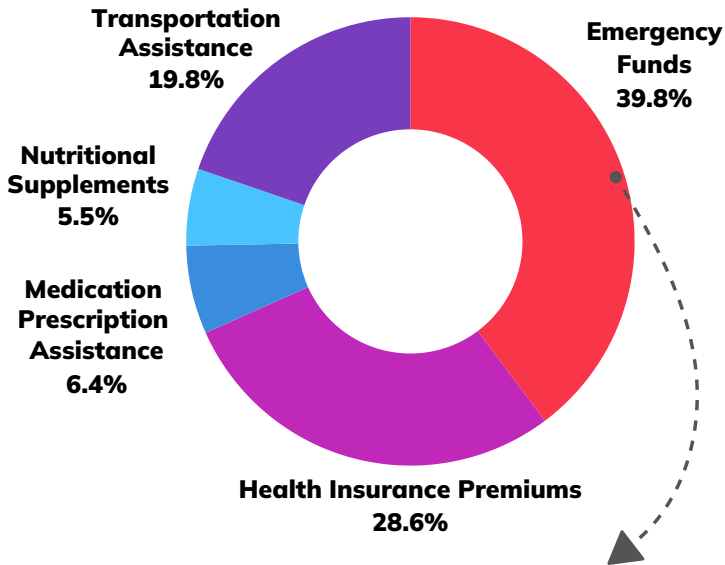


No One Should Cope with Cancer Alone

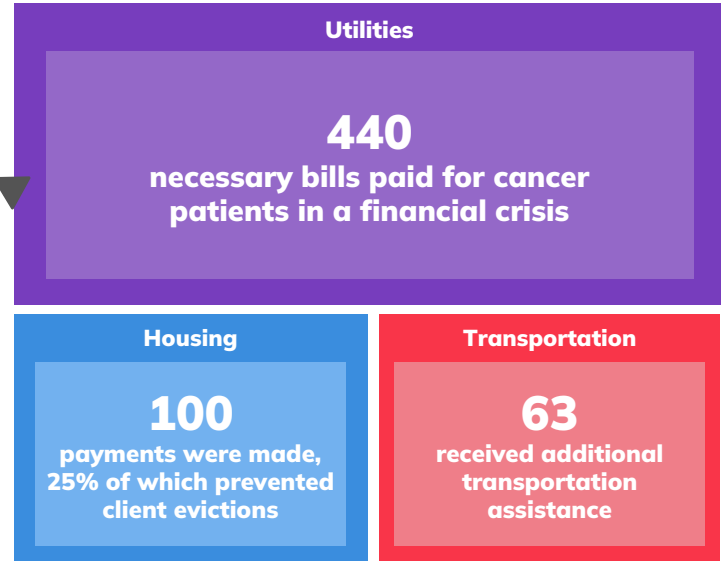
"It would definitely be detrimental to the community to lose access to Cancer Care Services because it is so comprehensive and well-rounded. [Cancer Care] is access for the whole family, not just the patient, which is so important...because it's not just the patient who is sick - it's the whole family."

– Erica, Cancer Survivor & Caregiver

Breakdown of Financial Assistance: \$463,545 Provided



Breakdown of Government Covid-Relief Fund Utilization



Government Covid-Relief funding allowed us to serve 75% more clients with emergency funds and transportation.
As of 2024, Covid-Relief funding is no longer available.

Facing Cancer Inequities in Tarrant County

Over the past year, Cancer Care Services:

- Analyzed trends in cancer inequities
- Examined the evidence-based literature associated with reducing inequities
- Considered frameworks for increasing health equity knowledge, awareness, and cultural competence among service providers
- Developed a logic model and implementation priorities with key evaluation metrics

Source: Cancer Care staff and community members led by Dr. Emily Spence, Associate Dean for Community Engagement and Health Equity at the UNT Health Science Center

How We are Addressing Local Cancer Inequities



In 2023, we created health screening and local resource awareness for 367 individuals. We collaborated with community partners to host health expos and screening events in medically underserved communities.



Our work continues in 2024 as we host community health expos and screening events in those same neighborhoods - plus more!

Scan the QR Code to View Upcoming Events



Cancer Care Services supports cancer patients, cares for caregivers, and empowers survivors to reduce the impact of cancer in Tarrant County.

100% of our services are FREE to clients.

www.cancercareservices.org | 817-921-0653 | info@cancercareservices.org